

SHINY HAPPY PEOPLE

LOW

A ♩ = 86



Meet me in the crowd, your love won't you just take it in-to town, Me in the crowd a -

4

♩ = 125

B



round_ ooh, Do do do do, do do do, do do do, Do do do do, do

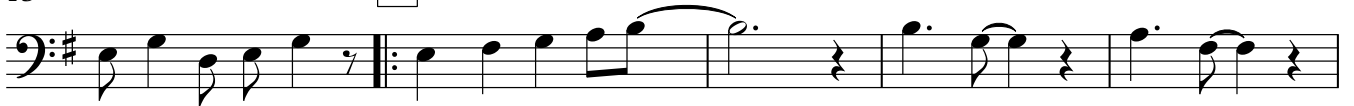
9



do do, Shi-ny ha - ppy peo - ple laugh-ing, Do do do do, do

13

C



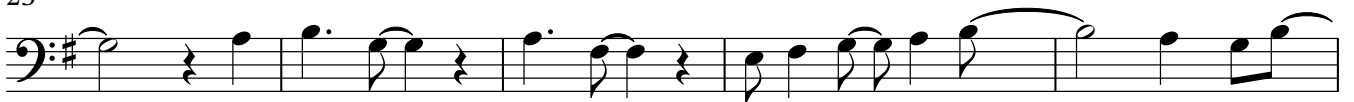
do do, do do do, Meet me in the crowd_ peo - ple, peo - ple,
Ev - 'ry-one a - round_ love them, love them,

18



Throw your love a - round_ Love me, Love me, Take it in -to town,
Put it in_ your hands, Take it,_ take it, There's no time to cry,

23



_ So ha - ppy, ha - ppy, Put it in_ the ground_ where the flow
Put it in_ your heart_ where to-mo-

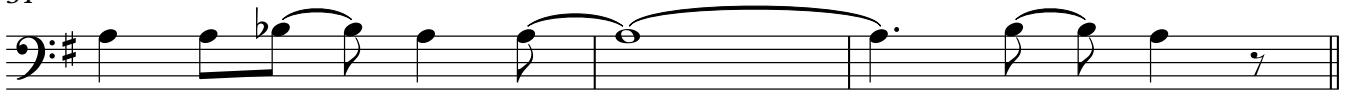
28

D



- ers_ grow._
- rrow_ shines._

31



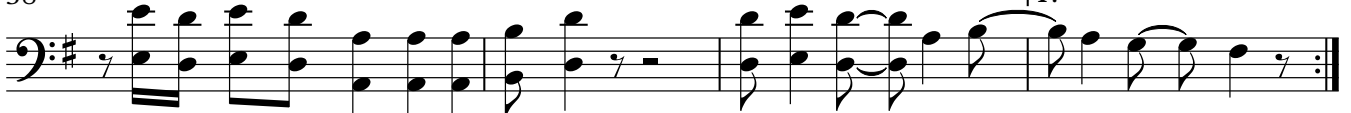
Gold and sil - ver shine,_____

34 **E**



Do do do do, do do do, do do do, Do do do do, do do do, do do do,

38



Ba-da dah dah dah, ba-da dah dah Shi-ny ha - ppy peo - ple laugh-ing,

42 **F** ♩ = 86



ple laugh-ing, Meet me in the crowd, your love won't you just take it in - to

45

♩ = 125



town, Me in the crowd a - round_____ Ooh



Do do do do do do do-do do, Do do do do do do do-do do, Do do do do

53 **G**

H

4



do do do-do do Shi-ny ha - ppy peo - ple laugh-ing,

60 **I**



Ha - ppy peo - ple,_____ Ha - ppy peo

1.2. | 3.

LAST TIME DON'T SING THIS PHRASE

63



- ple,_____ Shi-ny ha - ppy peo - ple laugh-ing,